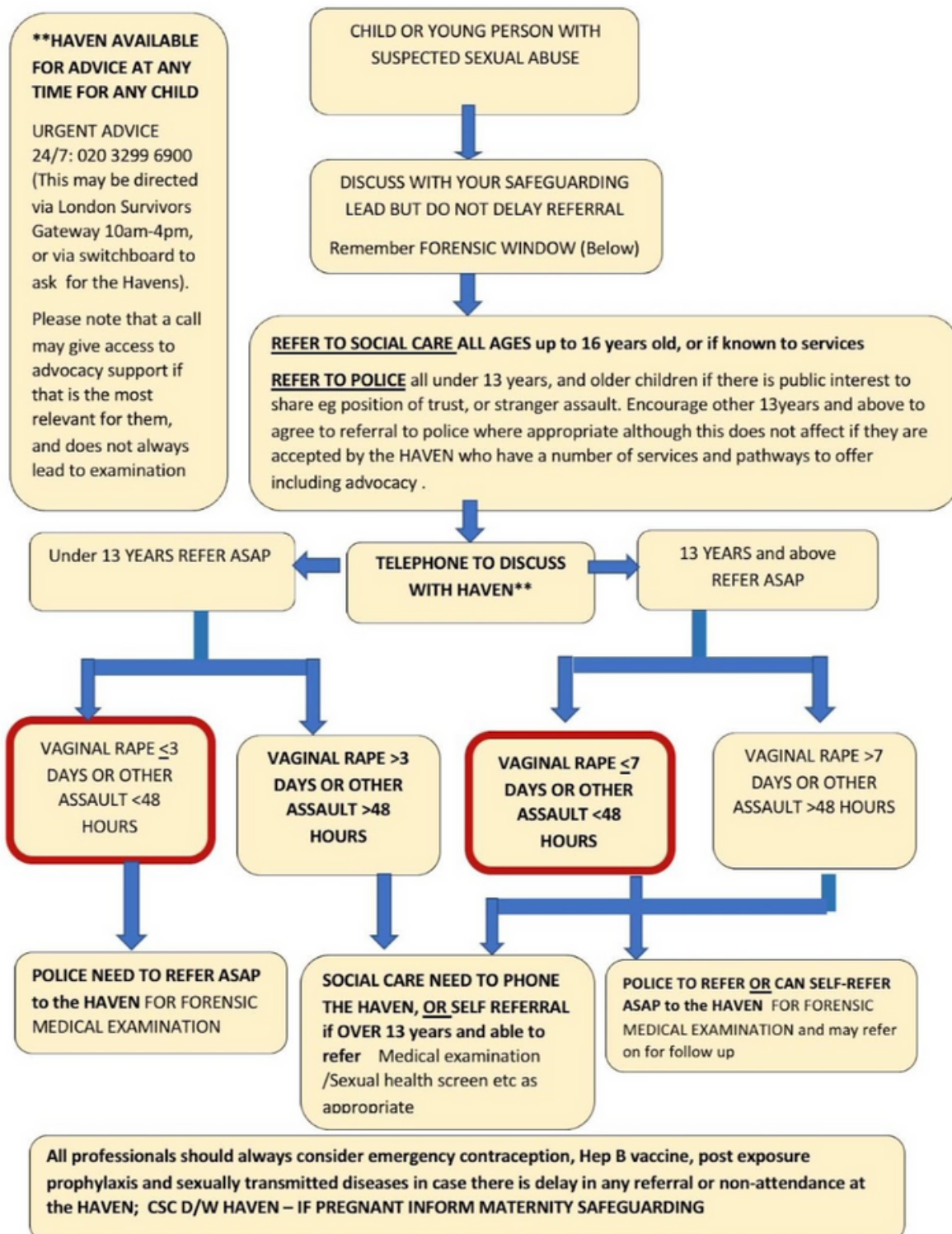


SAFEGUARDING

Please be aware of the processes we have in place for Safeguarding, should you come across any situations where you are concerned about the safety or wellbeing of one of your patients, please feel free to escalate these concerns. Please revisit the below:

Child sexual abuse pathway



Greenwich SEL ICS Designated Safeguarding Professionals with Named leads for Lewisham and Greenwich Trust, Named Doctors for Oxleas, and General Practice, Children's Social Care strategic lead for safeguarding, with HAVEN agreement, finalised November 22nd 2022